

PERSONAL NAVIGATOR

Sunrise: 4:08 a.m. Sunset: 9:34 p.m.
 Evening Attire: Cruise Casual

Today: Partly Cloudy High: 50°F/10°C
 Tomorrow: Partly Sunny High: 66°F/19°C

WEDNESDAY, MAY 28, 2014

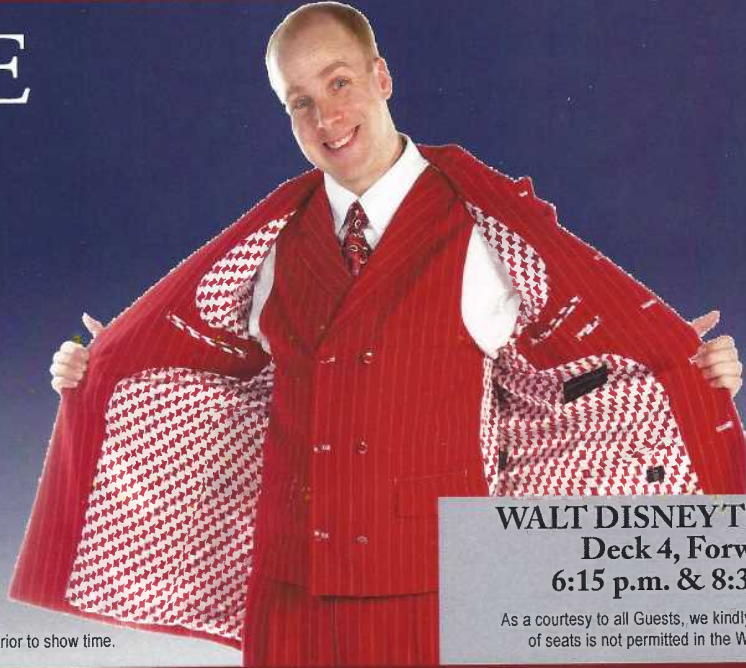
TRACY ARM, ALASKA

SHOWTIME

featuring

ADAM ACE

Enjoy the Comedy of Adam Ace in this fun family cabaret show!



WALT DISNEY THEATRE
 Deck 4, Forward
 6:15 p.m. & 8:30 p.m.



As a courtesy to all Guests, we kindly advise that the saving of seats is not permitted in the Walt Disney Theatre.

Assistance available at the entrance to the Walt Disney Theatre 30 minutes prior to show time.

Welcome to Tracy Arm

Tracy Arm Fjord is located in the Inside Passage approximately 45 miles south of Juneau. Cruise ships wind their way through the fjord which is located in the Tongass National Forest. The surrounding mountains are approximately 7,000 feet high and numerous waterfalls, created by melting snowcaps, can be seen along the route. The Twin Sawyer Glaciers, North Sawyer and South Sawyer, are located at the end of Tracy Arm. Wildlife is abundant and native animals include but are not limited to whales, sea lions, bald eagles, black bears and mountain goats. Due to the microscopic sediment or glacial flour, the water is a glacial blue.



TRACY ARM NARRATION

Tracy Arm view and narration available on Decks 4, 9 and 10. The narration will also be broadcast on Channel 251.

Decks 4, 9 and 10,
 12:30 p.m. to 5:00 p.m.

Don't Miss:

Q&A with Robert Creighton

Wavebands, Deck 3, Forward - 9:30 a.m.

You've seen him perform, now is your chance to ask your questions and get an autograph from this Broadway star.

Disney's Innovations: Theme Parks (18+)

Diversions, Deck 3, Forward - 9:30 a.m.

Join us for our presentation showing the "Top 10" greatest innovations that the Walt Disney Company has introduced to theme parks.

Icefields and Glaciers in Southeast Alaska featuring Doug Jones

Walt Disney Theatre, Deck 4, Forward - 9:30 a.m.

Ice has been an integral part of life in Alaska for thousands of years. Doug Jones will describe the formation, power and endurance of glacial ice and what you will see as you enter Tracy Arm, a fjord in Southeast Alaska's coastline. The Stikine Icefield surrounding Tracy Arm has been surprising researchers and Doug will share how that work is done and what has been learned.

Captain's Corner

Outlook, Deck 10, Midship - 10:15 a.m.

Join the Captain for an informal Q&A session about the operation of the Disney Wonder.

PRESERVING QUIET

Disney Cruise Line recognizes the importance of quiet and solitude to preserve wilderness values and marine ecology, and will minimize vessel announcements, Funnel Vision audio and music on the open deck while we are in our ports of call and sailing through Tracy Arm. Narration is at maximum levels permitted by local regulations and may seem quiet. Narration will also be broadcast on channel 251.



Book your next cruise onboard and save 10% on prevailing rates as quoted on disneycruise.com. Plus, get an onboard credit and special deposit rate! Visit the Future Cruise Sales Desk for more information.

DINNER MENU

Animator's Palate: Pacific Rim Cuisine
 Parrot Cay: Caribbean Island Cuisine
 Triton's: French Cuisine

DRINK OF THE DAY

Sunken Treasure (Alcoholic)
 Espresso Chiller (Non Alcoholic)

IMPORTANT NUMBERS

Fire/Security: 7-3001
 Medical Emergency: 7-3000
 Health Center: 7-1923

ADULT ACTIVITY HIGHLIGHTS

VISTA SPA FITNESS CLASSES & SEMINARS



- Sunrise Stretch* - Vista Spa Fitness Center - 7:00 a.m.
- Tour De Cycle* - Vista Spa Fitness Center - 8:30 a.m.
- Acupuncture Seminar: The Wonders of Acupuncture* - Outlook Cafe - 9:15 a.m.
- Body Sculpt Boot Camp* - Vista Spa Fitness Center - 9:30 a.m.
- How to Increase Your Metabolism* - Outlook Cafe - 11:15 a.m.
- Sunglow Makeover* - Vista Spa & Salon - 2:00 p.m.
- Acupuncture Seminar: Stress, Longevity and Chinese Medicine* - Outlook Cafe - 3:15 p.m.
- Complimentary Footprint Analysis* - Vista Spa Fitness Center - 4:30 p.m.

TASTING CLASSES

Champagne Tasting (21+) - Cadillac Lounge - 4:00 p.m.
Please make reservations for tastings at Guest Services for a nominal fee.
Tasting Seminars are only for Guests 21 and Older.

CLUB 18*21 - LUNCH
Triton's, Deck 3, Midship - 12:00 p.m.
Get to know your fellow 18*21 guests over a spot of lunch.

CLUB 18*21 - SOCIAL
Diversions, Deck 3, Forward - 10:00 p.m.
Come and socialize with your fellow cruisers

DISNEY'S ART OF ENTERTAINING: SIGNATURE ENTREE

Studio Sea, Deck 4, Midship - 10:15 a.m.
Today we show you how to prepare Lemon-Thyme Marinated Chicken.
Join us for an entertaining look at preparing this specialty. Recipes and tastings included.

DISCO LEGENDS



Wavebands, Deck 3, Forward - 10:30 p.m.
Put on your platform shoes and hit the dance floor as we catch a disco fever. Our '70s dance party will have you spinning like a disco ball.

FUN FOR ALL AGES HIGHLIGHTS

WAKE UP WITH DISNEY JUNIOR



Studio Sea, Deck 4, Midship - 9:00 a.m.
What happens when you experience unlimited fun with your favorite Disney Junior shows? You get an exciting dance party designed especially for preschoolers ages seven and under.

CAPTAIN'S CORNER

Outlook, Deck 10, Midship - 10:15 a.m.
Join the Captain for an informal Q&A session about the operation of the Disney Wonder.

\$7,000 MEGA JACKPOT BINGO



Wavebands, Deck 3, Forward - 11:00 a.m.
Don't miss your chance to take home big money! 4 CASH prize games and great raffle prizes to be won! Complete the fourth game in 46 numbers or less and win the \$7,000 Mega Jackpot! Pre Sales start 15 minutes prior to game.

ANIMATION - STITCH

Animator's Palate, Deck 4, Aft - 11:45 a.m.
Your Cruise Staff teach you how to draw one of your favorite Disney friends - Stitch.

CRUISIN' FOR TRIVIA

Promenade Lounge, Deck 3, Aft - 12:00 p.m.
Navigate your way through a round of questions testing your general knowledge.

CRAFTS: ORIGAMI CREATIONS

Promenade Lounge, Deck 3, Aft - 2:00 p.m.
Your Cruise Staff teaches you the ancient art of paper folding.

DISNEY CRUISE LINE TRIVIA

Promenade Lounge, Deck 3, Aft - 4:00 p.m.
Navigate your way through a round of questions testing your knowledge of Disney Cruise Line.

PIN TRADING STATION

Mickey's Mates, Deck 4, Midship - 7:15 p.m.
A variety of limited-edition pins exclusively designed and created for Disney Cruise Line.

WHO WANTS TO BE A MOUSEKETEER?



Studio Sea, Deck 4, Midship - 7:30 p.m. & 9:30 p.m.
Your chance to get in to the "hot seat" and win limited edition prizes. Or, play along as part of our live studio audience.

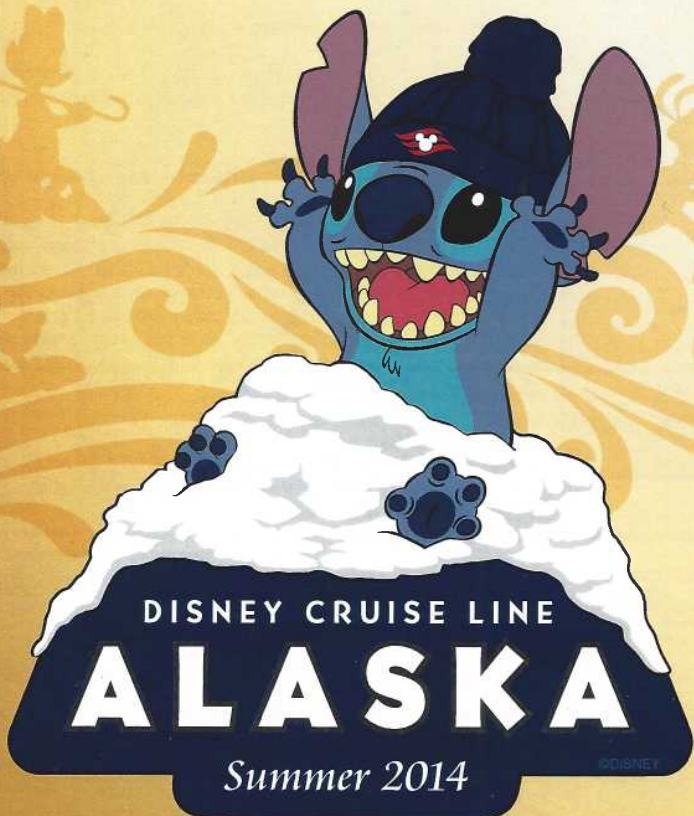
MOVIE JACKPOT BINGO



Wavebands, Deck 3, Forward - 7:30 p.m.
Four CASH prizes and great Disney movie prizes to be won. The snowball jackpot continues to grow and could go at this morning's session. Pre Sales start 15 minutes prior to game.

DISNEY DISCO

Studio Sea, Deck 4, Midship - 10:15 p.m.
Join your Cruise Staff as they play some of your favorite Disco tunes.



YOUTH ACTIVITIES HIGHLIGHTS

DINE & PLAY

A convenience for families dining at 8:15 p.m., our Youth Activities Counselors will be available at 9:15 p.m. at the entrance of Triton's, Parrot Cay and Animator's Palate dining rooms to bring registered children to join the fun in the Oceaneer Club and Oceaneer Lab.



Deck 5, Aft (7-18500) 9:00 a.m. - 11:00 p.m.

Infants and Toddlers can enjoy toys and activities at Flounder's Reef Nursery. Reservations are first come, first served so please stop by!



Deck 5, Midship (7-1440) 9:00 a.m. - 12:00 mid
 (3 - 12 years old)

TOY STORY BOOT CAMP

9:15 a.m.

Join Corporal Green in our own version of boot camp as we learn how to have fun - The Toy Story way!

HATS OFF TO PETER PAN

7:45 p.m.

You'll believe you can fly. All it takes is faith, trust, and pixie dust and a special visit from Peter Pan! Rediscover the magic of Neverland!



Deck 5, Midship (7-1445) 9:00 a.m. - 12:00 mid
 (3 - 12 years old)

SHAKE IT UP!

10:15 a.m.

You've seen the show; now come learn the move to one of the most popular dances of the summer!

PICTURE THIS

2:00 p.m.

Create your own professional picture frame and take a photo with a special guest.



Deck 2, Midship (7-5810) 10:00 a.m. - 12:00 mid
 (11 - 14 years old)

CROWNING OF THE COUCH POTATO

3:00 p.m.

Do you think you know your movies, TV and commercials? Well it's time to test your knowledge on all the recent releases.

SMOOTHIE TIME

9:00 p.m.

Join us for Smoothies



Deck 11, Midship (7-1456) 11:00 a.m. - 12:00 mid
 (14 - 17 years old)

CROWNING OF THE COUCH POTATO

1:45 p.m.

Do you think you know your movies, TV and commercials? Well it's time to test your knowledge on all the recent releases.

GENDER WARS

10:30 p.m.

Join us as we find out who really are the king or queen of the castle.

BUENA VISTA THEATRE

Deck 5, Aft

Today's Movies

CC Open Captioning



8:30 a.m.
 Duration:
 1 hr 52 mins
 Rating: PG



11:00 a.m.
 Duration:
 2 hrs 16 mins
 Rating: PG-13



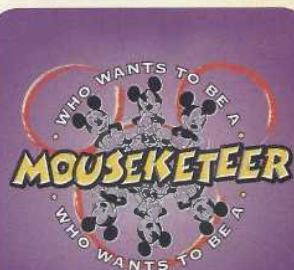
2:30 p.m.
 Duration:
 2 hrs 5 mins
 Rating: PG-13



5:45 p.m. & 8:15 p.m.
 Duration:
 1 hr 52 mins
 Rating: PG



10:45 p.m.
 Duration:
 1 hr 48 mins
 Rating: PG



FAMILY GAME SHOW

Your chance to get into the world famous hot seat and win an exclusive prize in our version of the well known television game show.

**Studio Sea,
 Deck 4, Midship,
 7:30 p.m. & 9:30 p.m.**



ADULT EXCLUSIVE

Put on your platform shoes and hit the dance floor as we catch the disco fever. The party kicks off with a groovy dance number from the Studio 54 dancers.

**WaveBands (18+),
 Deck 3, Forward,
 10:30 p.m.**

YOUTH ACTIVITIES OPEN HOUSE

Open House is an opportunity for all to come and participate in a variety of exciting activities and free time in the Oceaneer Club, Oceaneer Lab, Flounder's Reef Nursery, Vibe and Edge throughout the cruise. During these times secured programming will still be offered in the other venue for those looking to check their children into care.

Edge: 10:00 a.m. - 12:00 p.m. Disney's Oceaneer Lab: 9:00 a.m. - 10:00 a.m.
Vibe: 11:00 a.m. - 12:00 p.m. Disney's Oceaneer Club: 12:30 p.m. - 5:00 p.m.
Vibe: 4:00 p.m. - 6:00 p.m. Edge: 6:00 p.m. - 8:00 p.m.

MORE TO ENJOY WHILE ONBOARD

MORE MAGIC IN EUROPE



Set sail for Europe! Whether you choose the Mediterranean or northern Europe, you're sure to experience a magical voyage of culture with amazing family adventures - begin your journey today! Visit the Onboard Sales Desk to learn more about our special onboard booking offer.

DISNEY VACATION CLUB® GROUP PREVIEW



Want to learn more about taking magical vacations year after year? Please see a Disney Vacation Club representative on Deck 4, Midship, or call 7-2805 from your stateroom phone for more information about our interactive group presentation.

PORT AND SHOPPING INFORMATION



Skagway Shopping Highlights. 10:15 a.m. Promenade Lounge, Deck 3, Midship. Don't miss a thing in Skagway today. Join your Port Shopping Guide, Maureen, for your last chance to learn about the amazing shopping in Skagway! Free charm for all in attendance and a raffle to win a Diamond pendant.

QUARTER MASTERS ARCADE

You can drive a Hummer, be The Fast and The Furious, plus hop on a Crazy Taxi with no license required! All this at Quarter Masters Arcade located on Deck 9, Midship.

Connect @ Sea

We are now offering a NEW and improved Internet service to stay connected on your cruise like no other in the industry! Internet packages range from \$0.25 per MB - \$89.00 (1000 MB package). For more information contact your Connect@Sea Expert or Guest Services onboard.



Known as the "Gateway to the Klondike", Skagway celebrates its place as the one-time threshold of the late 19th-century Klondike Gold Rush with several must-see destinations designed with the entire family in mind. Choose the White Pass Scenic Railway as it climbs nearly 3,000 feet over 20 miles of steep grades and cliff-hanging turns, explore the beautiful scenery on one of our many hiking port adventures or get ready for an intimate Rib Boating Adventure through the Lynn Canal on our Ocean Raft Nature Adventure. Visit the Port Adventures Desk, located Deck 3, Midship, and our friendly Port Adventures team will assist in planning your day.

SHOPPING

PIN TRADING

Check out the Disney Cruise Line® pins, such as the Alaska 2014 commemorative pin, when you visit Mickey's Mates, Deck 4, Forward. Later, join the Officers of the Disney Wonder® Cruise Ship for pin trading fun at 7:15 p.m. in the Lobby Atrium, Deck 3, Midship.

SOPHIA FIORI DIAMOND TRUNK SHOW

Sophia Fiori is the world's leader in colored diamonds and jeweler to the stars. Your Sophia Fiori Jewelry Stylist and diamond industry expert has brought onboard over \$1 Million in Diamonds and Tanzanite Jewelry at all price points from \$500 up to extravagant connoisseur pieces. Treasure Ketch, Deck 4, Forward.

MARC JACOBS WATCHES

From sheik elegance to classic thru to everyday wear there is a Marc Jacobs watch to match your lifestyle. Created with passion and designed to perfection these timepieces make that ultimate statement. Marc Jacobs Collection available in Treasure Ketch.

PHILIP STEIN WATCHES ARRIVE!

Philip Stein Watches arrive onboard Disney Cruise Line. Philip Stein watches are not just a watch, but an element of a healthy and well-balanced lifestyle. People who wear Philip Stein care about their looks as well as their overall well-being. The timepieces reflect the attitude and personal values of the wearer. See the entire Collection today at Treasure Ketch, All at great Duty Free Prices.

H2O BATH COLLECTION

Treat yourself to the ultimate indulgence with H2O products. H2O offers shampoo, conditioner, lip balm, hydrating body lotion and after sun care. Available in Treasure Ketch.

ART GALLERY - THOMAS KINKADE PAINTINGS

Stop by the Art Gallery today to view our selection of Thomas Kinkade Limited Edition Disney paintings. While there, see if you can find some hidden characters in the artwork. Deck 4, Midship. Our Hostess is available between 7:00 p.m. and 9:00 p.m. for any hints!

VISTA SPA
 Deck 9, Forward - Phone: 7-1465
CLEOPATRA SPECIAL
 Today only! Receive the below 50 minute Treatment for only \$159
 Hot Stone Back Massage, Skin Nourishing Body Wrap, Foot Pressure Point Massage, Frangipani Scalp Massage
 18% Gratuity is automatically added to all Spa services, specials and amenities.

2014 DISNEY CRUISE LINE MERCHANDISE
 Step into Mickey's Mates today and commemorate your Disney cruise with a wide selection of 2014 Disney Cruise Line Merchandise. Mickey's Mates, Deck 4, Forward.



Shutters SAY CHEESE!
 Watch out for photographers on deck for scenic photos while in Tracy Arm. Check out your Binoculars in Shutters to enjoy the beautiful sceneries of Alaska. Hurry! Limited stocks only.
**Visit Shutters on Deck 4, Aft, to view your formal photographs and ask about how you can Get The Picture!*

IMPORTANT INFORMATION

Security Notice
 All Guests (including Children) who wish to disembark or embark the ship are required to present their Key to the World card at the gangway. A photo ID is also required for those Guests who are 18 years of age or older. Guests under the age of 18 are required to have a parent, guardian or other responsible adult sign an authorization form at the Guest Service Desk if they wish to go ashore unaccompanied or with any adult from another stateroom.

Sunscreen/Insect Repellent Advisory
 Use sunscreen first and protect against mosquito borne illnesses by applying insect repellent on top of sunscreen when going ashore.

Cold and Flu Reminder
 Please wash hands frequently and thoroughly, particularly before meals. Contact the Health Center by dialing 7-1923, should anyone in your party become ill.

Inclement Weather
 For the safety of all Guests, outdoor events may be changed due to unforeseen weather conditions.

Corridor Quiet Hours
 As a courtesy to all our Guests, please recognize quiet hallway hours from 10:00 p.m. til 8:00 a.m.

Environmental Message
 With Disney's commitment to the Environment please refrain from throwing anything over the Ship's side. Thank you.

No Reserved Seats Policy
 As a courtesy to all Guests we kindly advise that the saving of seats is not permitted in the Walt Disney Theatre, and the saving of the sun loungers is not permitted on Deck 9 and 10. Items left unattended will be returned to lost and found at Guest Services, Deck 3, Midship.

Smoking
 For the comfort of our guests, the following areas are designated as smoking areas:
 • Deck 10, forward, Starboard side
 • Deck 9, forward, Starboard side at Quiet Cove
 • Deck 4, aft, starboard side from 6:00 p.m. to 6:00 a.m. only (all of Deck 4 is non-smoking from 6:00 a.m. to 6:00 p.m.)
 Smoking is prohibited inside all guest staterooms and on stateroom verandahs. Guest found smoking in their staterooms or on their verandahs will be charged a \$250 stateroom recovery fee.
 Electronic cigarettes may only be used in designated smoking areas.

Walt Disney Theatre
 Theatrical performances may use artificial fog, strobe lights, pyrotechnics and other special effects. For the safety of our performers and the comfort of those around you, the use of any photography or video recording device or any electronic equipment is prohibited.

Verandah Safety
 Please do not leave any combustible materials on your balcony when not present in your stateroom for safety reasons.